

SUMMER 2026

# NJY CAMPS INFO KIT

Important things to know for the upcoming summer



## CONTACT INFO:

BETWEEN 8:00 AM & 9:00 PM 570-296-8596



CAMP NAH-JEE-WAH (NJW) EXT. 109 NJW@NJYCAMP.ORG



CEDAR LAKE CAMP (CLC) EXT. 147 CLC@NJYCAMP.ORG



NJY TEEN CAMP (TAC) EXT. 152 TAC@NJYCAMP.ORG



ROUND LAKE INCLUSION EXT. 145 RLC@NJYCAMP.ORG

**AFTER 9:00 PM** --- ➔ 570-296-8596 & FOLLOW PROMPTS

FOR SUPPORT LOGGING IN/TRANSPORTATION/FORMS/BAGGAGE:  
EXT. 177 NJYOFFICE@NJYCAMP.ORG

## IMPORTANT DATES:

TUESDAY, JUNE 30TH - FIRST DAY OF CAMP

SUNDAY, JULY 26TH - LAST DAY OF 1ST SESSION

MONDAY, JULY 27TH - FIRST DAY OF 2ND SESSION

SUNDAY, AUGUST 16TH - LAST DAY OF CAMP

SHORT STAYS:  
JUNE 30 - JULY 12  
JULY 27 - AUGUST 9

### GIRLS

### DIVISIONS

### BOYS

#### CAMP NAH-JEE-WAH

ABI	ENTERING GRADES 1-4	ASHER
NAOMI	ENTERING GRADE 5	DAN
HANNAH	ENTERING GRADE 6	LEVI

#### CEDAR LAKE CAMP

MIRIAM	ENTERING GRADE 7	JOSEPH
ESTHER	ENTERING GRADE 8	REUBEN
GOLAN	ENTERING GRADE 9	MASADA

#### NJY TEEN CAMP

ENTERING GRADES 10 & 11

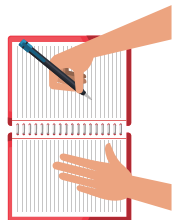
#### ROUND LAKE

GRADES 1-9 - SEE ABOVE  
GRADES 10+ - TEEN VILLAGE

## COMMUNICATIONS

### Writing

Your Child's Name  
Camp Name  
570 Sawkill Road  
Milford, PA 18337



### Pictures

Download the Campanion App  
for daily pictures!



### Emailing

Send emails through  
the Campanion App. Emails to  
campers are printed & distributed,  
like letters, daily.

Campers CANNOT receive emojis or  
attachments in their emails



# CAMP ESSENTIALS!



ORDER YOUR GEAR AT [NJYCAMPS.ORG/CAMPSPOT](http://NJYCAMPS.ORG/CAMPSPOT)



## REQUIRED UNIFORM INCLUDES:

- 1 Camp hooded sweatshirt (gray)
- 1 Camp t-shirt (white)
- 1 Camp t-shirt (green/blue)
- 1 Camp t-shirt (yellow/gray)
- 1 Camp Pinnie (Reversible)

## CLOSED-TOE SHOES

NJY Camps adheres to a closed toe shoe policy for everyone's safety. Crocs can be worn around camp, while flip-flops can only be used for shower-time.



On the last night of camp each session we get dressed up to celebrate the amazing summer we had together. Don't forget to pack a nice outfit! (Put it in a Ziploc bag to ensure it stays clean)

# BAGGAGE & TRANSPORTATION

## Luggage options:

Luggage is permitted to go on the bus with your child(ren) for an additional fee



- Bus transportation is available for all campers at no additional cost
  - If you choose to put luggage on the bus, there will be an additional fee of \$180 (for two duffels or soft trunks)
    - Complete the Additional Options Form in your [NJYHome](http://NJYHome) for this option
- If you choose to drive your child(ren) to camp, you will drop them off, give them a hug and kiss goodbye, and then depart. This is similar to a school drop-off line, you may drop-off their luggage at the same time for no additional fee.

## MEDICAL

Complete your child's medical forms at [NJYHome](https://www.njyhome.com).

If your child takes daily medication\*, you must register with The Medicine Shoppe [here](#).

All medications\*\* including vitamins must be sent in a blister-pack calendar card.

\*Inhalers, Epi-Pens, and Growth Hormone shots, **DO NOT** need to be ordered through The Medicine Shoppe.

\*\*No gummy medications of any kind are permitted

## PACKAGES

Please limit packages as much as possible.



Remember that **food is prohibited**. If you send food, it cannot be returned and will be donated.



## PROGRAM ADD-ONS

THESE CAN BE ADDED IN THE "ADDITIONAL OPTIONS" FORM ON YOUR CAMPER'S ACCOUNT

### TOTAL SPECIALTY CAMPS (TSC)



Take your abilities to the next level with 3+ hours a day of training from skilled professionals in soccer, basketball, baseball, and tennis.



LEARN MORE AT [TOTALSPECIALTYCAMPS.ORG](https://TOTALSPECIALTYCAMPS.ORG)



Whether you're an advanced rider, or it's your first time, horseback riding is for all experience levels!



### HORSEBACK RIDING

# A FEW OTHER THINGS...



## BUNK REQUESTS

SUBMIT



- Bunks are created according to session.
- Camp administration will make final decisions that best meet the needs of every camper.
- Complete the online form for all requests.



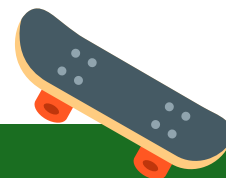
## MONEY



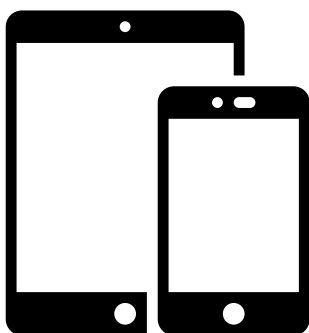
- Spending money is recommended for out-of-camp trips. Some locations are cashless, gift cards may be the best option versus cash.
- Please clearly label envelopes with your child's name, division, and amount.



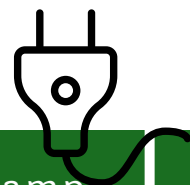
## EQUIPMENT



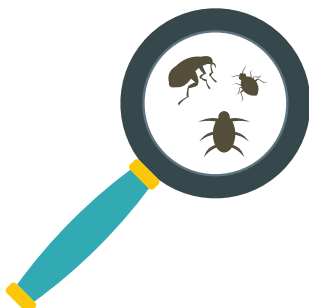
- NJY has all necessary sports equipment.
- If you do want to send your child with gear, please ensure it is properly labeled.



## ELECTRONICS



- The electronics policy varies from camp to camp, meeting the needs of each camper group.
- Please see more specific information in your child's account.



## LICE



- If your child arrives to camp with lice you will incur a \$250-\$400 fee for the lice to be removed by an outside professional vendor.